

CENTERO HOME

Flexible home automation



Making your **HOME** a smart one

Centero Home is the ideal point of entry into the world of the smart home. The central control unit (gateway) is connected by WiFi to the home router and connects all the taught-in devices to form one system. Operation is manual or automatic with an

iOS® or Android™ app. The Centero Home system can be used outside of the home's WiFi network via the cloud as well as locally. The user-friendly and intuitive operation by smartphone or tablet is convincing for both construction clients and modernisers.



ALL THIS CAN BE CONTROLLED WITH **CENTERO HOME**

The operation, control and automation of building technology products is possible using radio signals (868 MHz and 433 MHz), IP and infrared. All the functionalities for roller shutter and sun protection

controls are covered. Furthermore, modern building technology and many security components, as well as lifestyle products from other manufacturers, can be integrated.



Centero Home building automation encompasses

- The entire visual and sun protection with elero radio drives and receivers
- Radio-controlled mains sockets as well as lighting and heating elements with elero radio receivers
- Motion detectors and smoke alarms, window contacts, radiator thermostats and temperature sensors from Homematic
- Lighting systems from Philips Hue and Osram Lightify/Smart+
- Amazon Alexa, Netatmo weather station, DoorBird, Sonos using Centero Home Plus

New applications are constantly being added: a compatibility list is to be found under www.elero.com/centerohome

Regulate events using **TASKS**



No-one at home? No problem!

Meaningful events around the home can be defined quite easily as if-then conditions using tasks. They are performed at a predefined time of day, for example, or are triggered by a sensor signal: the smoke alarm is activated and the roller shutters are automatically raised to open the second escape route.

Your home should also appear occupied when you are on vacation? The lighting is turned on, the sun protection retracted and the roller shutters closed. All this is arranged so that it suits the wishes and habits of the residents.

TIPS

Critical devices



Critical devices are defined by the user – these are device states you want to be informed about. This makes sense for patio awnings and door/window sensors, for example. A warning symbol on the start screen indicates when an awning is retracted or a window is open.

Calendar function



The roller shutters in the bedroom are opened punctually at 7.30 every morning and the light is turned off. Such events can easily be stored as a task. Using the calendar function such events can be stored for use every working day, for example, or specifically excluded for holiday periods.

Create **SCENES** for more creature comforts



Quality of life at the push of a button

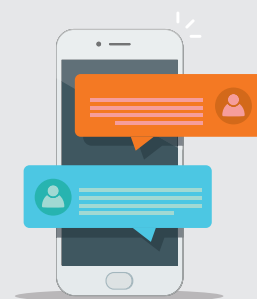
In the course of our day-to-day life some processes are repeated. If a suitable scene is stored in the smart home system, unnecessary effort can be avoided every day – the creature comforts of your customers are enhanced perceptibly. A TV evening? Reach for the smartphone to dim the lights and close the

external blinds. The evening turns cool at a garden party? The “Summer Evening” scene stored in the app is activated: LED lighting and patio heaters are turned on, the awning is extended. All this can be created and stored by the user intuitively and easily using Centro Home.

Favourites



Devices and scenes that are frequently used are stored under “Favourites”, meaning they are accessible quickly and directly on the start screen. The allocation of devices and scenes to “Favourites” can take place when these are installed or created, or at a later point in time.



If desired the user receives a **push message** or **e-mail** when a motion detector is activated, for example. Your customers can decide for themselves whether and how they wish to be informed.

MORE

creature
comforts

CENTERO HOME PLUS

Even more smart home benefits


Your customers would like to enjoy even more benefits? Then Centero Home Plus is just the right thing for them. The in-app upgrade offers additional functions and applications that make the home even smarter. The in-app purchase is completed quite easily using the menu item “Settings” in the basic version of Centero Home.

The occupants of the home can then use comfortable voice control of the taught-in devices using the digital assistant Amazon Alexa and can control lighting or visual and sun protection using voice commands, for instance. Music lovers can then use

the WiFi-based sound systems from Sonos. And thus the user can control the sound using an app – room for room or comfortably for the entire house. If a Netatmo weather station is integrated into the system, personal weather data can be displayed in Centero Home Plus. A feeling of greater security is provided by the use of a video door station from DoorBird – this makes it possible to see visitors and speak with them before the door is opened. This also serves to prevent break-ins; burglars frequently use the doorbell to check whether anybody is at home.

The benefits of Centero Home Plus at a glance

- **Voice control of the integrated devices with Amazon Alexa**
- **Integration of Netatmo weather stations also in conjunction with tasks**
- **Integration of Sonos sound systems**
- **Visitor management with DoorBird intercom systems**



Alexa, open
the blinds in the
living room!

BIDIRECTIONAL RADIO

for a more modern home



Centero Home combines the benefits of Proline 2, the bidirectional radio system from elero, with mobile and user-friendly operation via smartphone and tablet. Regardless of where users are located at any point in time, reliable feedback ensures security as to whether commands have been performed correctly. elero radio-controlled drives, JA Comfort-868 drives for venetian

blinds and all elero radio receivers utilise and offer ideal prerequisites for integration into Centero Home. A contemporary smart home system is supplemented with hand-held or wall-mounted radio transmitters – for example in the nursery or on patio doors. Thus enhancing the suitability of building technology for everyday use.



AT A GLANCE

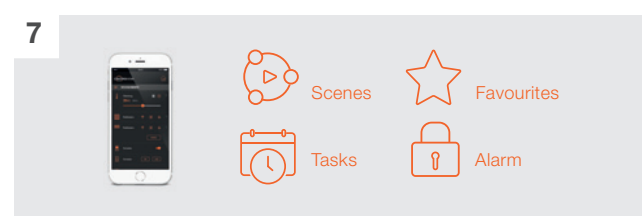
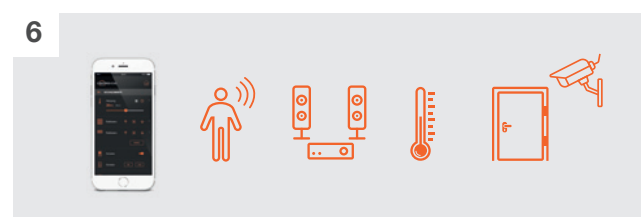
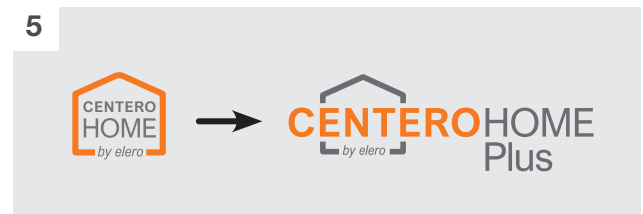
- Flexible:** Centro Home can be upgraded at any time
- Secure:** The status of the connected devices is displayed – so your customers can be sure that everything is okay at home
- Simple:** User-defined, intuitive operation with a tablet or smartphone
- Individual:** The settings can be changed in line with the individual wishes and lifestyles of the residents at any time



COMMISSIONING

is simple and intuitive

1. Install the Centro Connect app from a store on the smartphone or tablet.
2. The available drives and radio receivers are taught in step by step (roller shutters, venetian blinds, awnings etc.) and the configuration saved in the gateway.
3. Connect the Centro Home gateway via WiFi to the home router.
4. The Centro Home app is installed on one of the end-user's mobile devices. Then install the configuration which had been saved beforehand in the gateway with the Connect app.
5. Optionally an upgrade to the Centro Home Plus version with greater functionality can be bought using an in-app purchase.
6. Other devices (Philips Hue, Osram Lightify/ Smart+, Homematic, etc.) are taught in and the devices from the Plus version are integrated (incl. Amazon Alexa, Sonos, Netatmo, DoorBird).
7. After this, favourites, groups, actions, tasks and scenes are created.
8. The complete configuration, which was saved to the cloud, is loaded onto the other mobile end devices of the occupants. It is now possible for one or more users to operate the application anywhere in the house or when out and about.



The **HOME** and **CONNECT** apps



The Centero Connect app is exclusively required by elero specialist partners!

It is used to commission the

Centero Home gateway and to teach in drives and radio receivers. The configuration is then transferred to the gateway. Neither the WiFi password nor an end-user mobile device is required.



The Centero Home app

is required to operate the elero drives radio receivers and so as to teach in and operate other

devices. It is installed on the end-user's smartphone or tablet. With an in-app purchase it is possible to upgrade to the Plus version, which offers additional useful home automation functions.

The Centero Connect and Centero Home apps are available for iOS® and Android™ devices

Gateway – Data and facts

General data

| | |
|-----------------------------|-----------------------|
| Item number | 28 805.0001 |
| Operating temperature (°C) | 0 to +40 |
| Dimensions W/H/D (mm) | 110 x 110 x 32 |
| Material (housing) / colour | Polycarbonate / black |



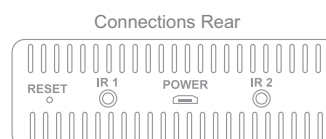
Technical data

| | |
|-----------------------------|--|
| Power supply | 5 V DC / 1.5 A |
| Power consumption (W) | 1.3 |
| Network | WLAN IEEE 802.11 /b/g/n |
| Radio transceiver | 1 x transceiver for 433 MHz & 1 x transceiver for 868 MHz |
| Radio transmitter range (m) | > 100 (free field) |
| Infrared (IR) | Integrated IR receiver 38 KHz and transmitter unit |

Technical hotline: technik@elero.de

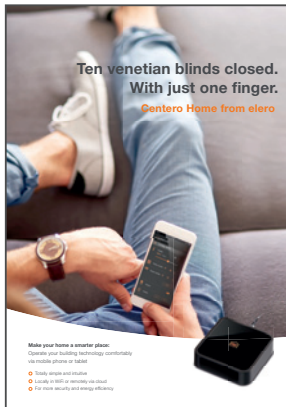
Connections / Features

| | |
|--|--|
| Connections for external IR transmitters | 2 x 3.5 mm jack plug, addressable (rear panel) |
| Learning functionality | Radio and IR |
| IR to radio connector | Actuation of a radio command using IR remote control |
| RGB-LED indicator (cover) | Programmable, for device status display |



Due to the modulation characteristics of the 868 MHz frequency only sensors from one manufacturer may be selected in each case as the actuator for switching actions or events, for example. In this respect it is possible to preselect a sensor actuator for the respective manufacturer.

For your end-user advertising:



Flyer DIN A4, 2 pages,
in brochure quality or
as a lightface brochure.

Order free of charge from
marketing@elero.de

elero

elero GmbH
Maybachstr. 30
73278 Schlierbach
Germany

www.elero.com

a **Nice** group company