

Keep these instructions in a safe place!

Installation instruction:

Fasten the motor with 4 – M8 or M6 screws

- screw depth for M8 and M6 = 18 mm
- tightening torque for M8 = 12 Nm
- tightening torque for M6 = 5 Nm

Hollow shaft is 18 mm dia (13 mm dia with adaptor)

Attach power supply wire

Adjust the limit switches (see instruction below).

Do not use manual override until limit switches have been adjusted!

Limit switch adjustment:

The limit switches are factory set in central position with 4 turns for each direction. Rotation directions for “A” and “B” are indicated on the housing.

Adjustment of limit switch direction “A”:

Holding in the limit adjustor “A” while turning in the (+) direction will increase the number of turns. The (–) direction will decrease the number of turns. Turn either direction until desired position is reached. Releasing the adjuster will automatically set the limit.

Adjustment of limit switch direction “B”:

Holding in limit adjustor “B” while turning the (+) direction will increase the number of turns. The (–) direction will decrease the number of turns. Turn either direction until desired position is reached. Releasing the adjuster will automatically set the limit.

Disengagement of limit switch

(for continuous motor operation):

Remove limit switch cover (E) and loosen the locking screw on slide “S”. Move the slide up to the limit. This disengages the limit switch shaft and the motor can be operated continuously.

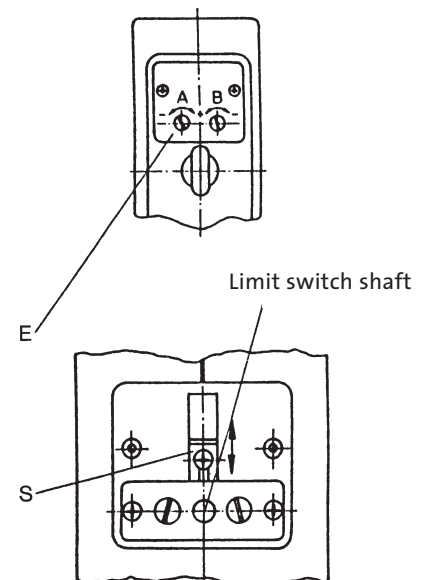
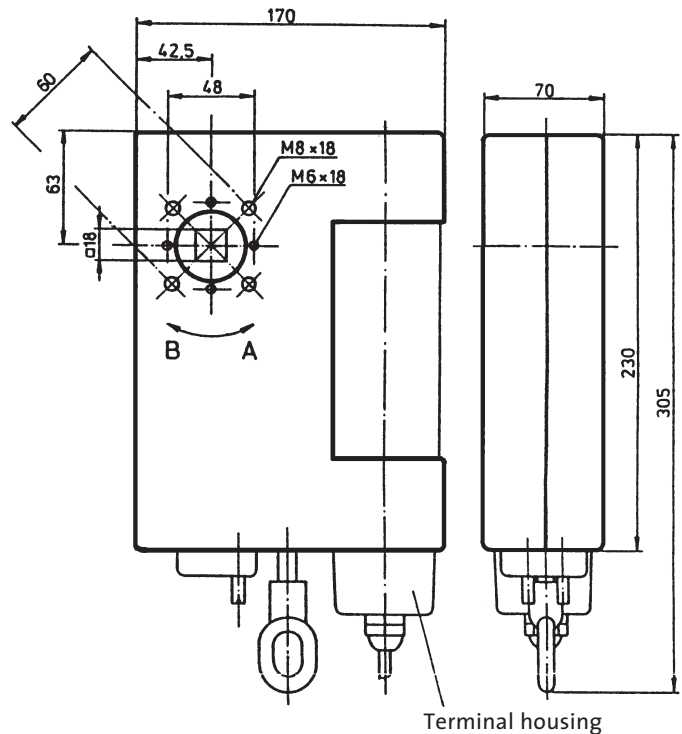
Re-engagement of limit switch

(for motor to operate on limit switches):

Push in the limit switch shaft and turn it slightly left or right until it snaps back into place. Move the slide back into position and fasten the locking screw.

Note!

When using manual override (pull down and turn) ensure that you do not wind the curtain through the limit positions, as this will lose the travel position, which will require resetting.



Connection examples



Important safety advices! Observe the following instructions.

Warning!



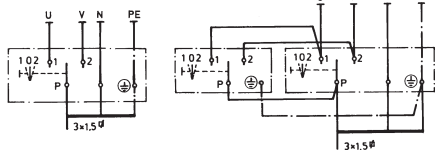
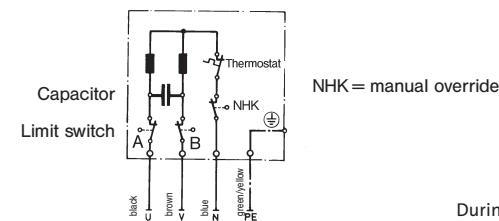
Risk of injury due to electrocution. The connections to the mains must be made by authorised specialist personnel.

Check the system regularly for wear or damage.

The regulations of the local energy supply company as well as the regulations for wet and damp rooms according to VDE 0100 must be followed when making the connections. Only use unmodified original elero electrical parts.

Keep people away from the system until it is stationary. When working on the system (servicing, cleaning windows etc.), always separate it from the mains supply.

Connection example for single phase motor

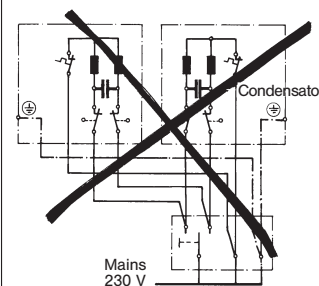


Connection of a switch (f.ex. key switch, push button, etc.)

Connection of 2 momentary switches:
Push button (momentary switch)
Key switch (momentary switch)

During the installation, mains isolation can be achieved either with a male Hirschmann plug Art. nr. 13 701.5701 and female Hirschmann socket Art. nr. 13 701.5301 or a two pole isolator switch with a minimum of 3 mm opening width.

Wrong connection



Attention!

To avoid counter voltage of capacitors **do not** connect motors in parallel.



Assembly

Observe the following installation instructions!

- The drive must be fixed in such a way that it is not a danger to personnel.
- Before installing the drive, all lines and equipment, which are not required for operation, must be removed from the site.
- During installation, during operation and when work is carried out on the system, the option to separate all three poles from the mains must always exist (Hirschmann connector and Hirschmann coupling or a two-pole switch with minimum 3 mm contact gap or all-pole main switch).

- If the drive is controlled by a switch with OFF presetting (dead man's button), the pushbutton must be fitted at a height of more than 1.50 m and separated from the moving parts. The travel range of the systems must always be visible during operation.
- Moving parts in a drive, which are below 2.5 m, must be guarded.
- For drives supplied without a driven part the design torque and the design operating time must agree with the properties of the driven parts. Please note the technical data on the type plate.
- The drive must be installed so that it cannot get wet.

- In the case of awnings it is essential to ensure that a horizontal safety distance of >0.4 m is left between the fully-unrolled awning and a fixed object.
- Keep children away from the (remote) control unit.
- Note the advice in the controller documentation.

Emergency hand crank:

- When using manual operation keep people away from the system.
- Follow the instructions for the use of the emergency hand crank.
- The emergency hand crank must be attached so that it is easy to operate when necessary.

Technical data

Type	Max. torque		Lifting capacity on the barrel		Barrel \varnothing x wall thickness mm	Speed rpm	Max. limit switch range in barrel turns	Lateral space requirement	Voltage Volts	Current Ampères	Power Watt	Protection type	Rating in min. - intermittent
	Nm	mkp	N	kg									
Box 5	60	6.0	2500	250	48 x 1.5	11.5	21	70	230	2.2	500	IP 54	5
			2000	200	60 x 1.5								
			1700	170	70 x 1.5								
			1900	190	63 x 1.5								
			1440	144	83 x 1.5								

All the motors have a cable of 1.5 m length; the cable diameter is 4 x 0,75 mm².

Installation of the adaptor

