

Caution!

**For the safety of persons it is important to follow these instructions!
Keep these instructions!**

Technical data

Safety instructions

Technical data:

Version	3~230 V	3~400 V
Rated voltage	3~230 V/PE (1~230 V/PE)	3~400 V/PE
Frequency:	50/60 Hz	
On-site fuse protection:	10 A	
Breaking capacity:	3 kW	4 kW
Contactors:	mech. locked	
Protection class:	IP 65	
Motor and control cable:	1 m long	
Housing dimensions:	H 180 x B 182 x T 85	



Warning!



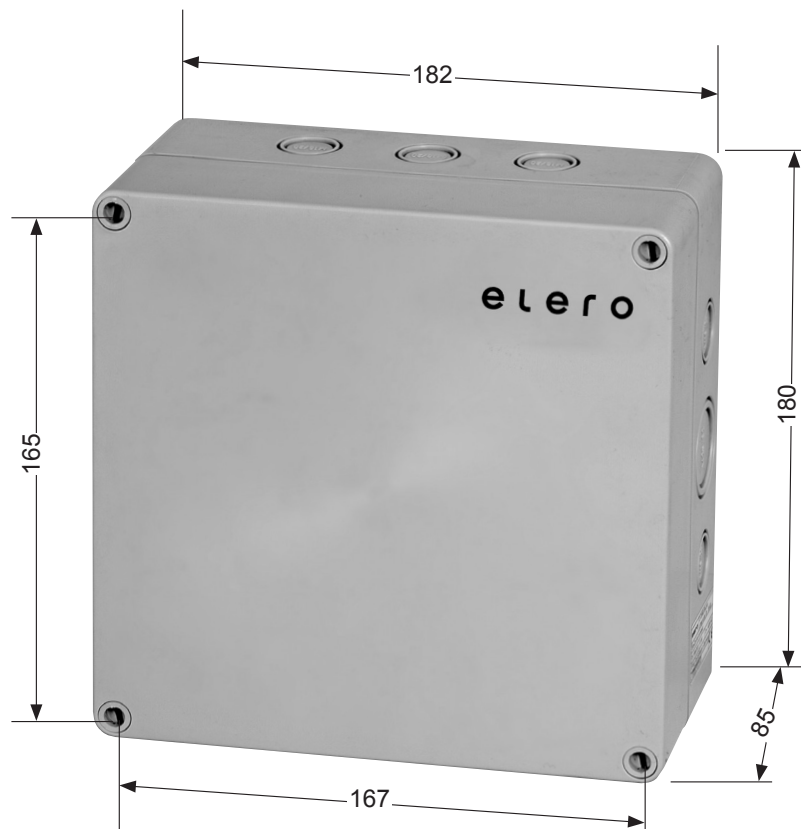
Important safety instructions!

Observe the following instructions.

Risk of injury due to electrocution.

- The connections to the 230/400 V mains **must** be made by authorised specialist personnel.
- **The controller must be unplugged from the mains during connection work.**
- Connect controller in clockwise rotating field.
- Swap 2 phases of the mains cable in case of incorrect rotation.
- Check the system regularly for wear or damage.
- The mains isolation unit must be secured against any unintentional and unauthorised reconnection and must always be accessible.
- Keep people away from the system until it is at standstill.
- When working on the system (e.g. maintenance) always disconnect the system from the mains.
- Externally connected components must as a minimum fulfil the basic insulation requirements for 230 volts.
- Do not use motor and control cables outdoors!

Fastening dimensions Assembly



Housing fastening

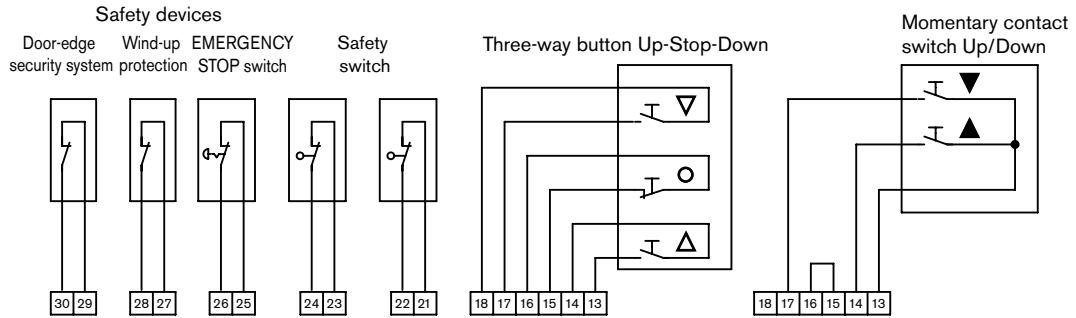
below the cover screws
Hole diameter = 5 mm


Notes for safe installation

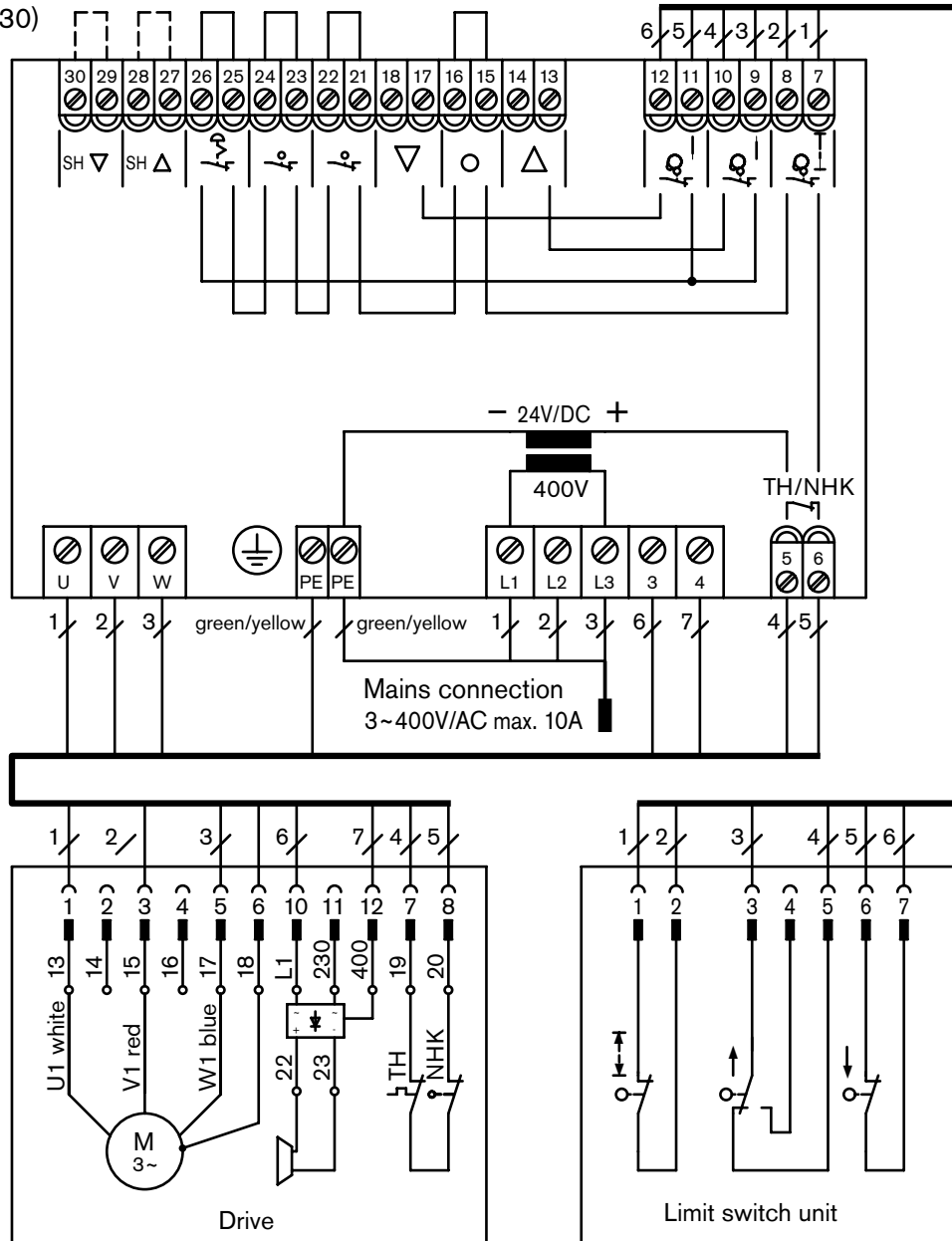
1. Check the nominal voltage before making the electrical connections (3 x 400 V; 3 x 230 V or 1 x 230 V)
2. Install compact BoxControl close to the drive. Keep the controller free from dirt.
3. Connect the mains with the power off. Check that there is no power.
4. Connect the operating units.
5. Plug in motor and limit switch cable on the drive.
6. Close the housing cover on the drive.
7. Turn on the main switch.
8. Check direction of rotation with the up button. The drive has to turn in the UP direction.
9. If this is not the case, disconnect the controller from the mains and change over phases L1 and L2.
10. Reconnect the controller with the mains and check the direction of rotation once again.
11. Install the door.
12. Set the limit switch. See „Operating instructions for door drives“.
13. Close the covers on the drive and controller properly.
14. Make sure that there is no dirt or damage on the sealing surfaces.

Connection example

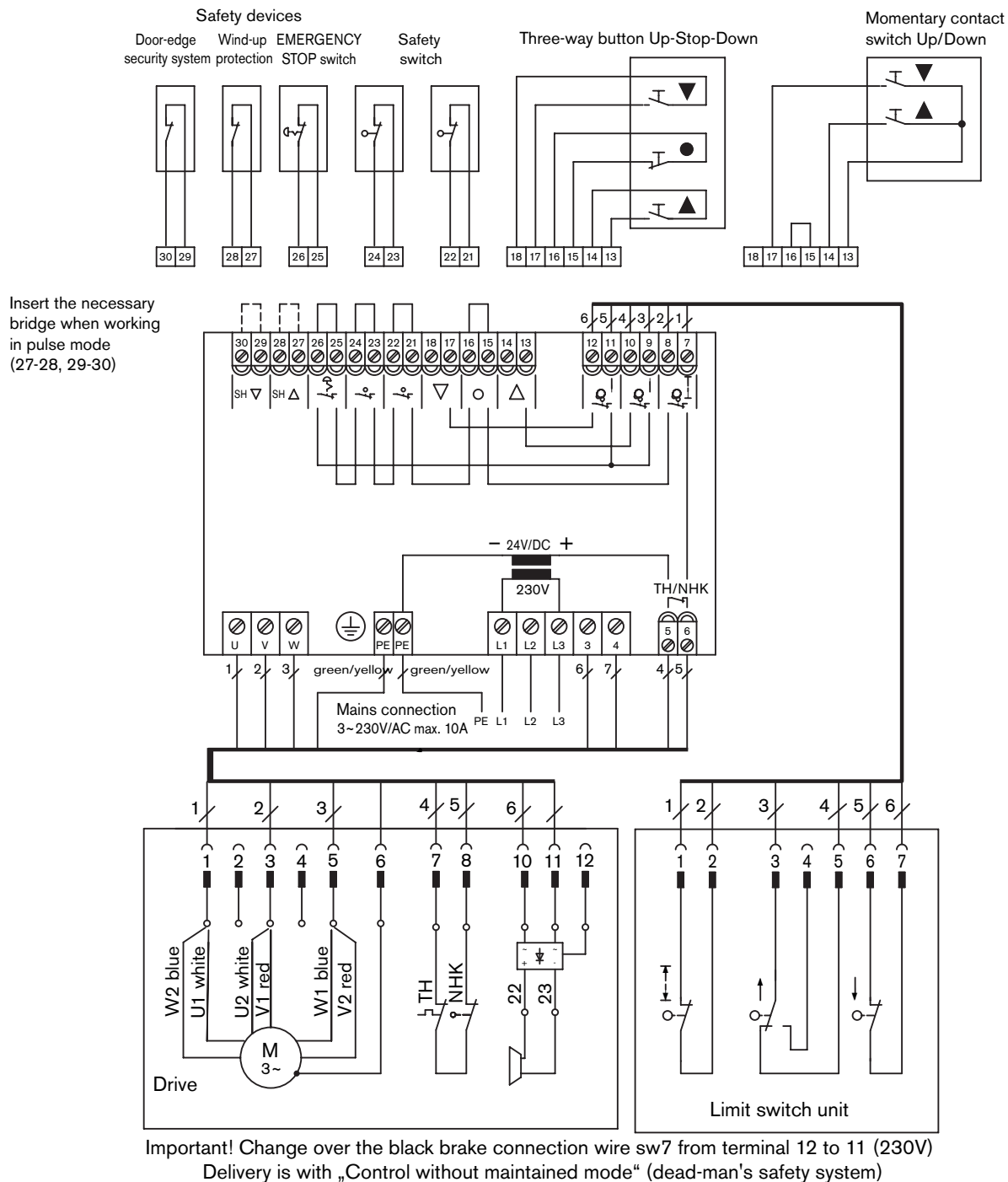
DFM/DKM-Antriebe 3 x 400 V



Insert the necessary
bridge when working
in pulse mode
(27-28, 29-30) 

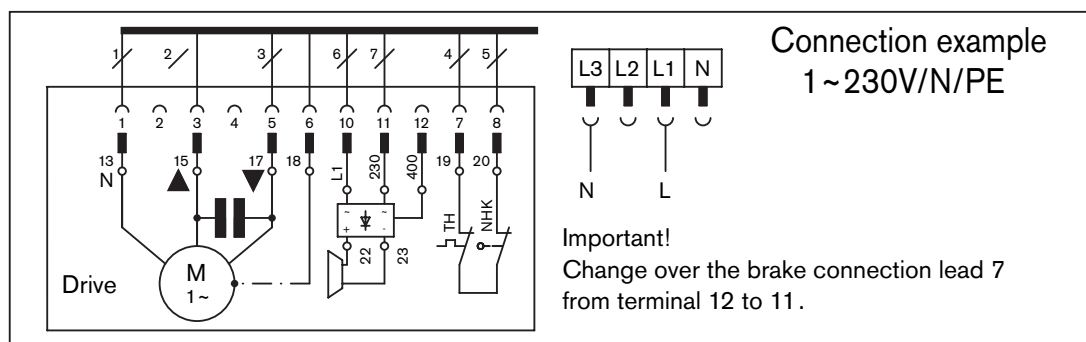


Connection example for DFM/DKM drives 3 x 230 V and WFM/WKM-170 1 x 230 V

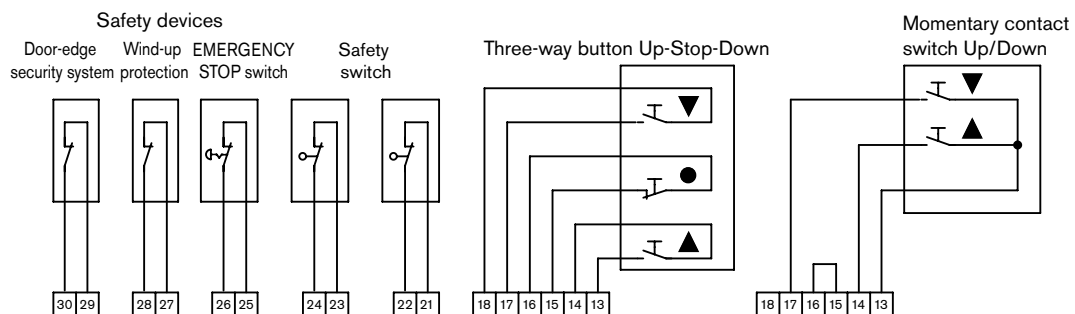


WFM/WKM 170

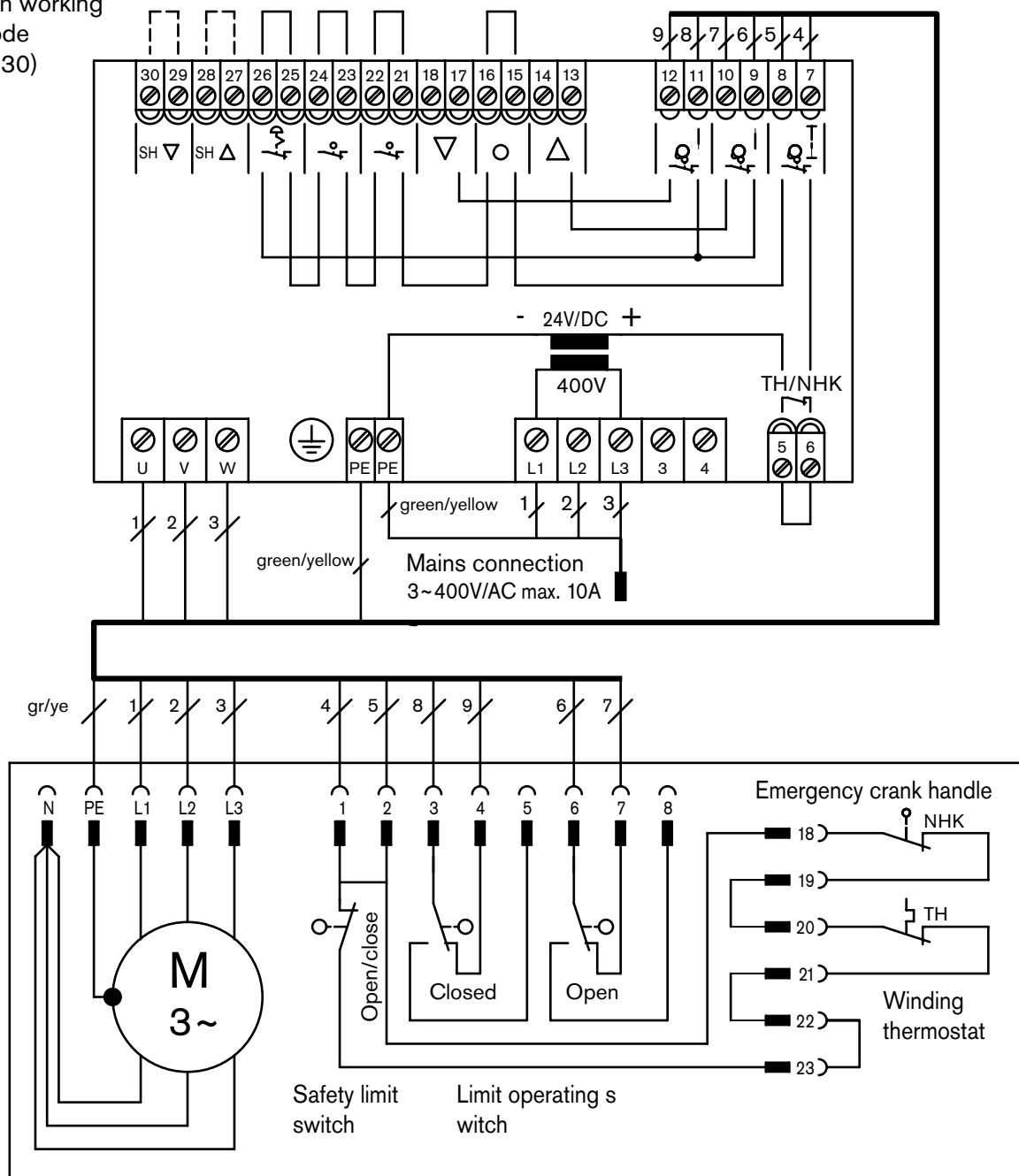
1 x 230 V



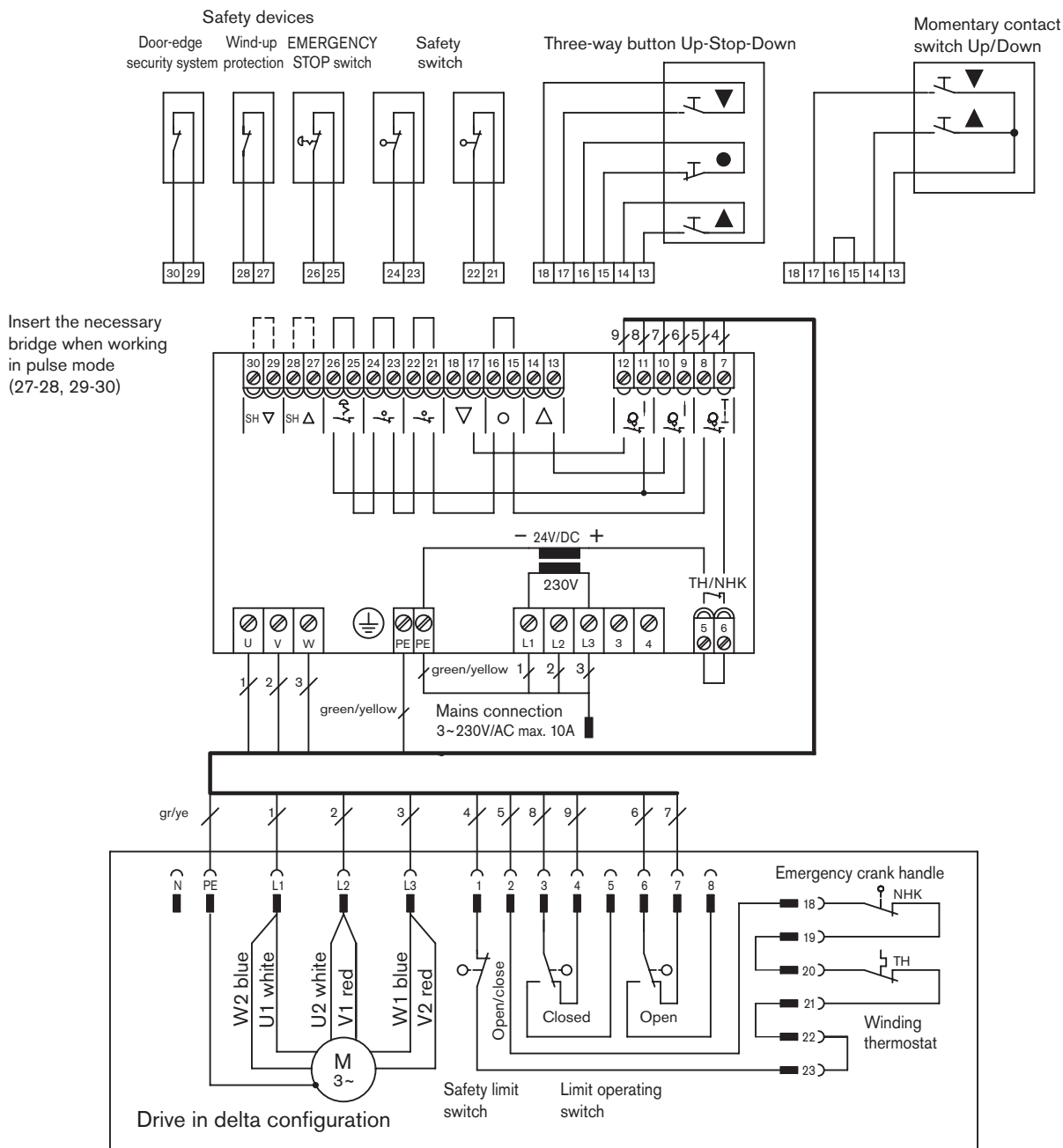
Connection example for BoxLine DSM; DRM; DCM 3 x 400 V



Insert the necessary bridge when working in pulse mode (27-28, 29-30)

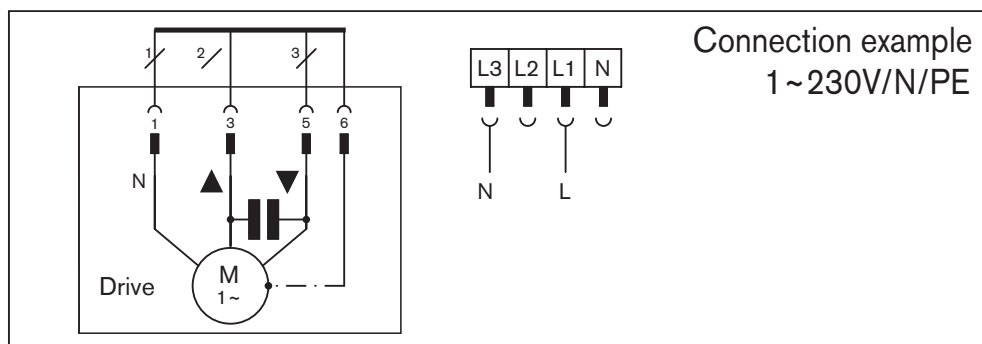


Connection example for
BoxLine DSM; DRM; DCM **3 x 230 V and**
BoxLine WSM; WRM; WCM **1 x 230 V**



BoxLine
WSM; WRM;
WCM

1 x 230 V



Manufacturer's declaration

Manufacturer's declaration

elero GmbH hereby declares that BoxControl compact complies with the basic prerequisites and the other relevant provisions of the EC directives. The complete manufacturer's declaration can be found in the download area of our website.